

REFLEXIONS

Designer Flooring



TITANIUM



DUR-A-FLEX
INNOVATION FROM THE FLOOR UP



TYPICAL USES

- Lobbies & Entry Ways
- Walkways
- Showrooms
- Concourses
- Waiting Rooms
- Aisles
- Retail Areas

NIMBUS / TITANIUM

*Re*FLExions Designer Flooring by Dur-A-Flex® is a decorative, poured in place flooring system combining Dur-A-Flex's durable and reliable resin systems with the latest in effects pigments to produce inspiring one-of-a-kind looks. ReFLExions consists of a pigmented, epoxy primer coat; pigmented, epoxy body coat and a long-wearing, gloss or satin finish urethane topcoat. In addition to its seamless cleanability, it requires no waxing.

UNIQUE IN EVERY WAY

- A smooth, glass-like finish offering breath-taking looks
- Choose from single or multicolor applications
- Limitless combinations allows you to make your own unique floor
- Totally seamless – easily integrates into coves and walls
- Competitively priced with traditional flooring options

DUR-A-FLEX DURABILITY

- Exceptional wear characteristics
- Stain resistant
- Chemical resistant
- UV stability ensures consistent color for the life of the floor

LOW MAINTENANCE

- No waxing required – ever
- Reduces maintenance costs up to 85%

SUSTAINABLE

- Uses 100% solids epoxies and aliphatic urethanes
- Zero VOCs
- CA 01350 air quality compliant
- Requires no harsh cleaners



COPPER



BLIZZARD

ReFLEXions Standard Colors



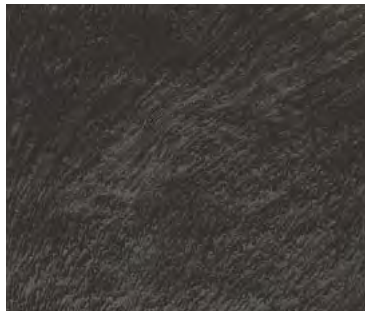
BLIZZARD



TITANIUM



NIMBUS



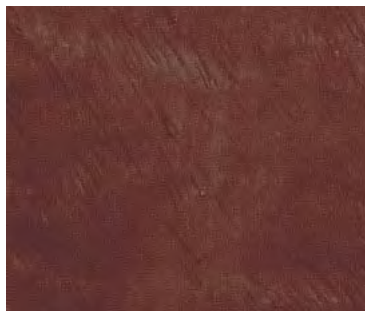
ONYX*



SPICE



HAZELNUT



GARNET



COFFEE



COPPER



SKY



PACIFIC



DEEP SEA

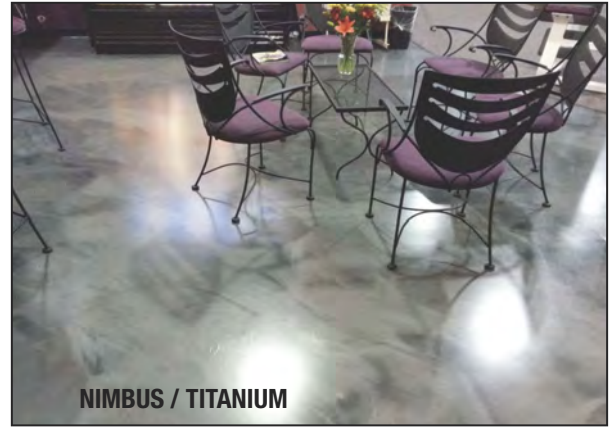
Numerous looks and effects can be achieved by application process and/or use of multiple colors and shades.

* For use as a primer or background color only.

The samples shown are only close approximations and should not be used for specification purposes.
Contact Dur-A-Flex to obtain actual samples for best color selection.



**CA 01350
COMPLIANT**



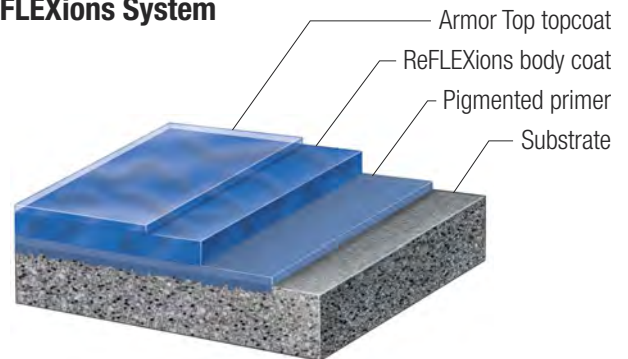
Physical Properties

Properties	Test Method	Result
Hardness (Shore D)	ASTM D-2240	75-80
Water Absorption	ASTM D-570	0.04%
Flammability	ASTM D-635	Self extinguishing
Flame Spread/NFPA 101	ASTM E-84	Class A
Tensile Strength	ASTM D-638	3,700 psi
Flexural Strength	ASTM D-790	4,700 psi
Compressive Strength	ASTM D-695	16,000 psi
Izod Impact (ft. Lb./in. notch)	ASTM D-256	0.50
Bond Strength to Concrete	ASTM D-4541	400 psi substrate fails
Elevated Temperature	MIL D-3134	No slip or flow
Thermal Shock	MIL F-52505	No cracking or loss of adhesion
50 cycles of immersion in chilled & boiling water		
UV Resistance	MIL F-52505	No chalking or loss of adhesion
Abrasion Resistance	ASTM D-4060	10 mg. loss - Gloss finish
CS17 Wheel 1000 GR Load 1000 Cycles		12 mg. loss - Satin finish
VOC Content		0 g/L
Salt Spray Resistance, 25% solution at 90°F		No effect after 100 hours
Toxicity		Non-toxic, meets USDA requirements

LEED® Eligibility

ReFLEXions	Possible LEED Credits
Construction Waste Mgmt MR2	2
Regional Material MR 5.1, 5.2	2
Low Emitting Materials IEQ 4.2, 4.3	2

ReFLEXions System



No one makes it easier to select, specify and install high performance flooring systems than Dur-A-Flex. Every step of the way, you'll experience superior customer service, professionalism and expertise as well as finely tuned processes—all the essentials which contribute to a solid business relationship.

